



Interface protection system units compliant with Italian standard CEI 0-21 PMVF52

Product designation

Product type designation

General characteristics

Description

System with or without neutral in low voltage. Dual threshold minimum and maximum voltage and frequency protection.

Type of system

Three-phase with/without neutral / Single-phase

Power supply

Operating voltage range		21...264VAC / 21...264VDC
Rated frequency	Hz	45...55
Power consumption Max	VA	6.2
Power dissipation Max	W	2

Auxiliary supply

Rated auxiliary supply voltage Us	AC	min	VAC	24
		Max	VAC	240
	DC	min	VDC	24
		Max	VDC	240

Power consumption

AC (Max)	VA	2.5VA at 24VAC; 6.2VA at 240VAC
DC (Max)	VA	60mA at 24VDC; 7mA at 240VDC

Power dissipation

AC (Max)	W	1.6W at 24VAC; 2W at 240VAC
DC (Max)		

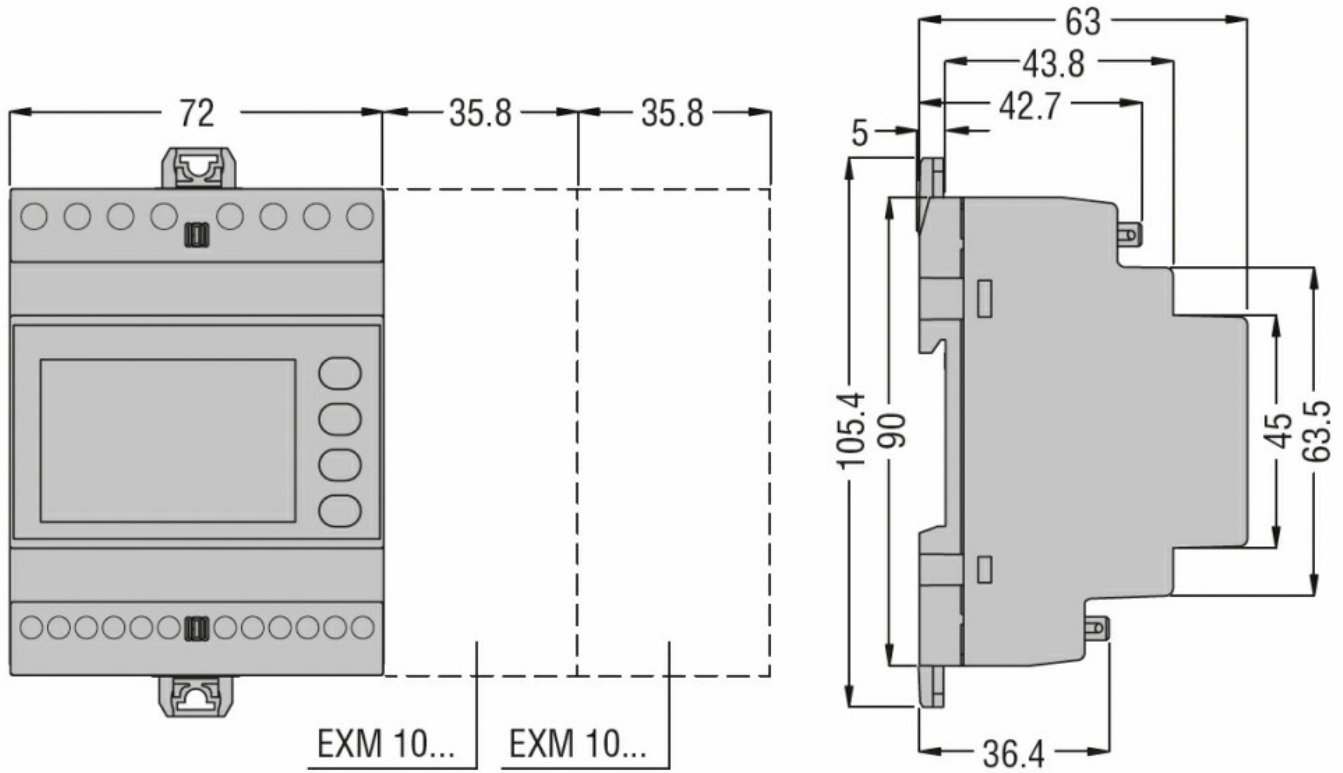
INTERFACE PROTECTION UNIT COMPLIANT WITH ITALIAN STANDARD CEI 0-21, FOR SINGLE-PHASE AND THREE-PHASE SYSTEM, WITH OR WITHOUT NEUTRAL, IN LOW VOLTAGE, DUAL THRESHOLD MINIMUM AND MAXIMUM VOLTAGE AND FREQUENCY PROTECTION, 230VAC - 400VAC

	W	1.5W at 24VDC; 1.7W at 240VDC
Immunity time for microbreakings	ms	240VAC 50Hz ≤2000ms 240VDC ≤1000ms 24VAC 50Hz ≤30ms 24VDC ≤15ms
Voltage inputs		
Maximum rated operational voltage		400VAC L- L;230VAC L-N 50Hz
Measurement range	V	40...480VAC L- L; 23...277VAC L-N
Frequency range	Hz	45...55
Relay outputs		
Number of relays	Nr.	3
Contact arrangement		2 changeover contact/SPDT each + 1NO
Rated operational voltage AC (IEC)	VAC	250
UL/CSA and IEC/EN 60947-5-1 designation		For OUT1-OUT2 contact: 8A 250VAC AC1/C300, 8A 30VDC For OUT3 contact: 2A 250VAC AC1/C300; 2A 30VDC
Digital inputs		
Number and type of inputs		5 to be used with dry contact with common.
Input voltage		12VDC isolated
Input current	mA	6
Connections		
Terminals type		Screw - removable
Tightening torque for terminals	max max	Nm lbin 0.8 4.5
Conductor cross section		
AWG/Kcmil	min Max	AWG AWG 24 12
IEC	min Max	mm ² mm ² 0.2 4
Insulations		
Rated insulation voltage Ui	V	300
Housing		
Execution (n° of modules)		4
Material		Polyamide

INTERFACE PROTECTION UNIT COMPLIANT WITH ITALIAN STANDARD CEI 0-21, FOR SINGLE-PHASE AND THREE-PHASE SYSTEM, WITH OR WITHOUT NEUTRAL, IN LOW VOLTAGE, DUAL THRESHOLD MINIMUM AND MAXIMUM VOLTAGE AND FREQUENCY PROTECTION, 230VAC - 400VAC

Mounting	Modular 4U	
IEC degree of protection	IP40 on front; IP20 at terminals	
Dimensions (W x H x D)	mm	71.6 x 105.4 x 63
Weight	g	326

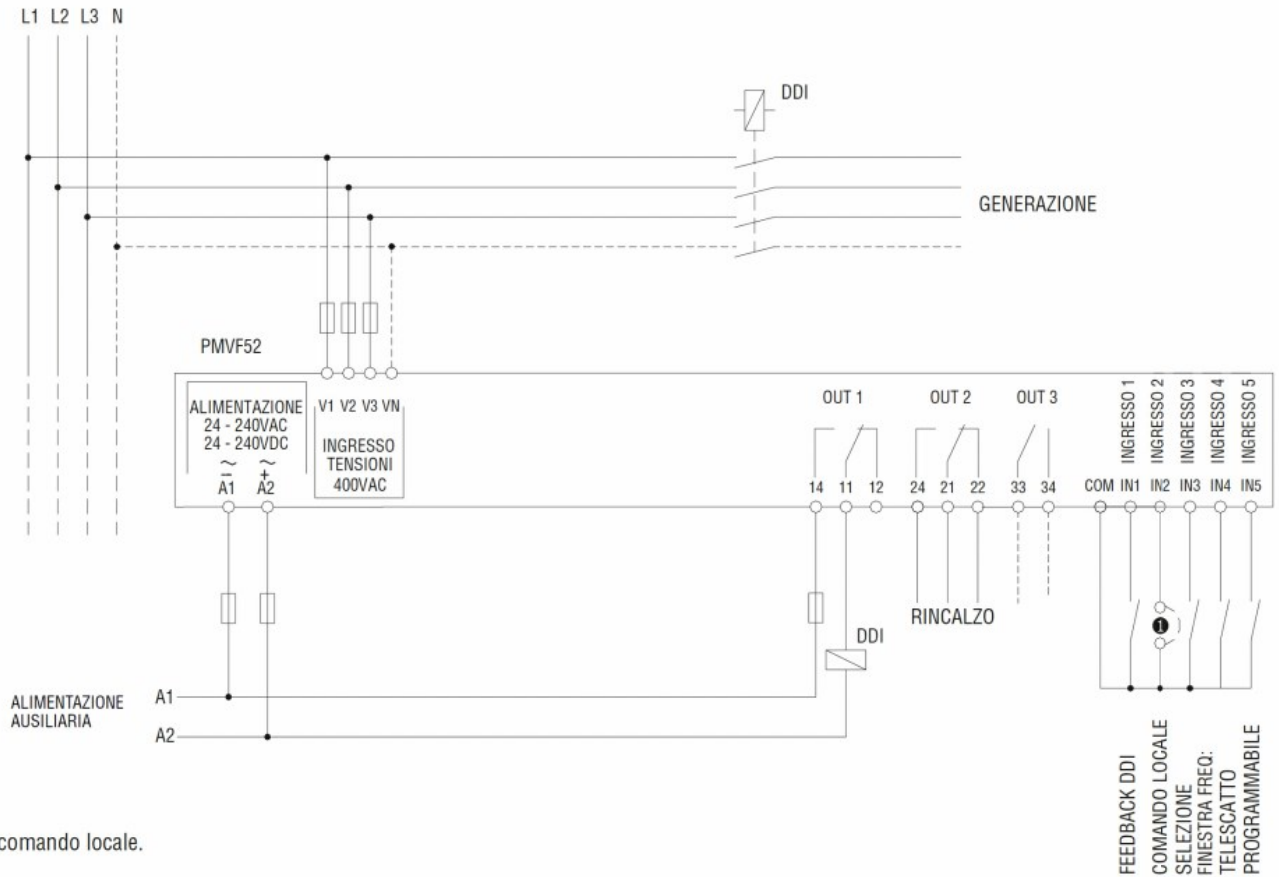
Dimensions



Wiring diagrams

Collegamento trifase

RETE DI DISTRIBUZIONE IN BASSA TENSIONE



❶ Scelta comando locale.

Certifications and compliance

Compliance

- IEC/EN/BS 60255-27
- IEC/EN/BS 61000-6-2
- IEC/EN/BS 61000-6-4
- IEC/EN/BS 61010-1

Certificates

CEI 0-21

ETIM classification

ETIM 8.0

EC001438 -
Voltage
monitoring relay