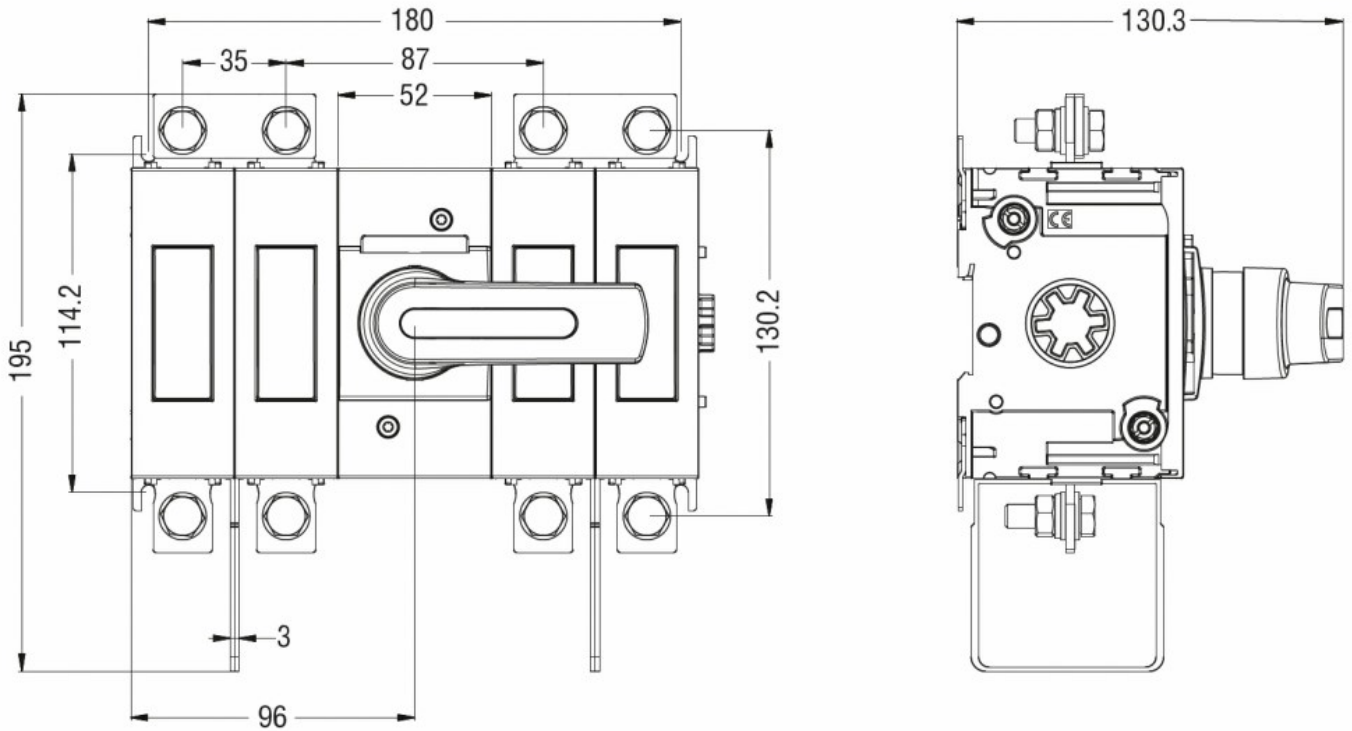


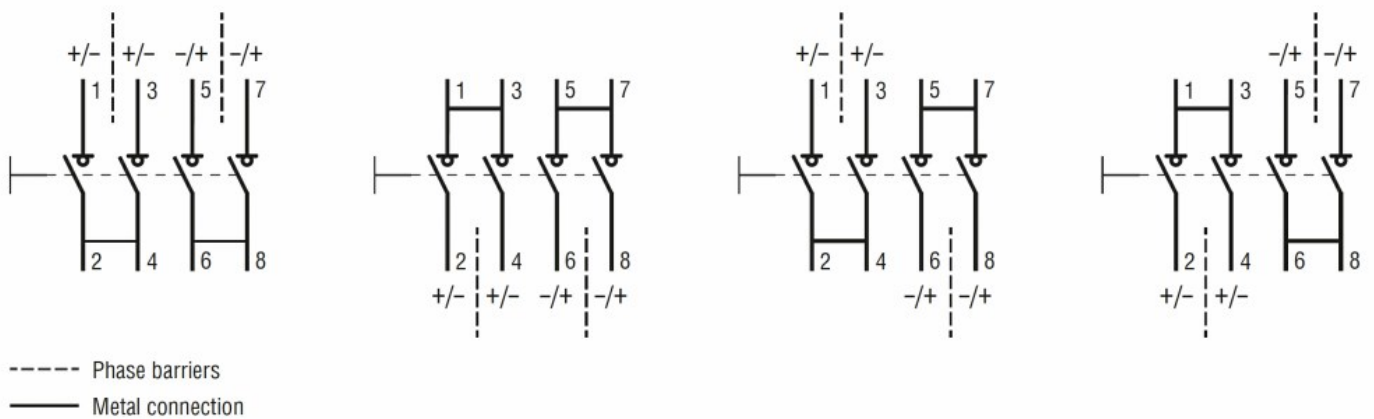


Product designation	Switch disconnecter		
Product type designation	GLD		
Number of poles	Nr.	4	
Operating voltage type	DC		
Contact characteristics			
IEC Conventional free air thermal current I _{th}	A	160	
Rated insulation voltage U _i IEC/EN	V	1500	
Operating current I _e			
DC21B			
	600V	A	160
	800V	A	160
	1000V	A	160
	1200V	A	160
	1500V	A	160
DCPV1			
	Operating current I _e 600V	A	160
	Operating current I _e 800V	A	160
	Operating current I _e 1200V	A	160
	Operating current I _e 1500V	A	160
DCPV1			
	600V	A	160
	800V	A	160
	1200V	A	160
	1500V	A	160
Mechanical features			
Operating position	normal allowable	Vertical plan Any	
Fixing	Screw / DIN rail 35mm		
Terminals	type	M8 x 25	
Tightening torque for terminals	min	Nm	15
	max	Nm	22
	min	lbin	132
	max	lbin	194
Conductor section	IEC min	mm ²	70
	IEC max	mm ²	185
	AWG/kcmil min		00
	AWG/kcmil max		400
Ambient conditions			
Operating temperature	min	°C	-25

Storage temperature	max	°C	+55
	min	°C	-40
Max altitude	max	°C	+70
		m	3000
Resistance & Protection			
Pollution degree	3		
Dimensions			



Wiring diagrams



Certifications and compliance

Compliance	IEC/EN/BS 60947-1
	IEC/EN/BS 60947-3
	UL98B
Certifications	CE

ETIM classification

ETIM 8.0

EC000216 -
Switch
disconnector